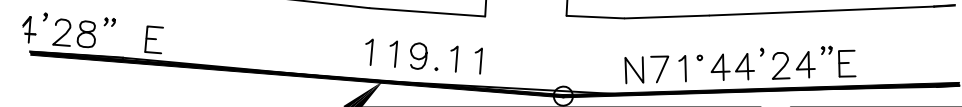


WOODEN  
FLOATING  
DOCK "G"  
COMMON AREA

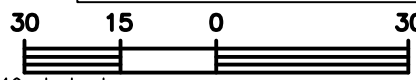
METAL RAMP  
COMMON AREA



DOCK G SLIP NO.	AREA SQ. FEET	LENGTH FEET
1	713	45.1
2	698	45.0
3	714	45.1
4	699	45.0
5	714	45.0
6	699	45.0
7	712	45.1
8	703	45.0
9	706	45.1
10	710	45.1

DOCK G SLIP NO.	AREA SQ. FEET	LENGTH FEET
11	713	45.1
12	704	45.0
13	706	45.0
14	706	45.0
15	706	45.0
16	706	45.0
17	708	45.1
18	703	45.0
19	716	45.0
20	704	45.1
G-T	2633	87.8

AVERAGE DOCK WIDTHS:  
MAIN CENTER DOCKS ARE 7 FEET WIDE  
FINGER DOCKS ARE 4 FEET WIDE  
END DOCKS ARE 6 FEET WIDE



V:\1703chr\active\170304019\ld\04019\dwg\04019-docks.dwg  
2005-03-17 01:43PM By: adawkins

SCALE IN FEET

DECEMBER 2004  
170304019

ORIGINAL SHEET - LEGAL



**Stantec**

**Stantec Consulting Services Inc.**  
990 Morrison Drive  
Charleston SC U.S.A.  
29403  
Tel. 843.577.4926  
Fax. 843.723.0440  
www.stantec.com

Client/Project  
PREPARED FOR BOHICKET YACHT CLUB, LLC  
BOHICKET MARINA VILLAGE  
TOWN OF SEABROOK ISLAND, CHARLESTON CO., S.C.

Figure No.  
Title  
**DOCK G - SECTION 1**